



REECOXS
ENGINEERING



COMPANY PROFILE

*"Our commitment,
Your satisfaction"*



ISO 9001
Quality
Management
Systems
CERTIFIED

ISO 14001
Environmental
Management
CERTIFIED

ISO 45001
Occupational
Health and Safety
Management
CERTIFIED



BUILD THE TRUST
BUILD THE FUTUTRE

REECONS COMPANY PROFILE

TABLE OF CONTENT

OVERVIEW

History	04
Founder's message	06
Mission, Vision & Core Values	08
Business Activities	10

SCOPE OF BUSINESS

Business Services	14
Design Consultancy	16
Value Engineering	18
MEP Expertise	20
Specific Expertises	22
Maintenance	24

STRUCTURE & RESPONSIBILITY

Organizational Chart	28
Key Persons	30
Quality Management	32
Safety Management	34

PERFORMANCE

Business Sectors	38
Business Reports	40
Recognition	42
Clients & Partners	44

REFERENCES

MEP Expertise	48
Real-estate Projects	74
Partner Projects	88

OTHERS

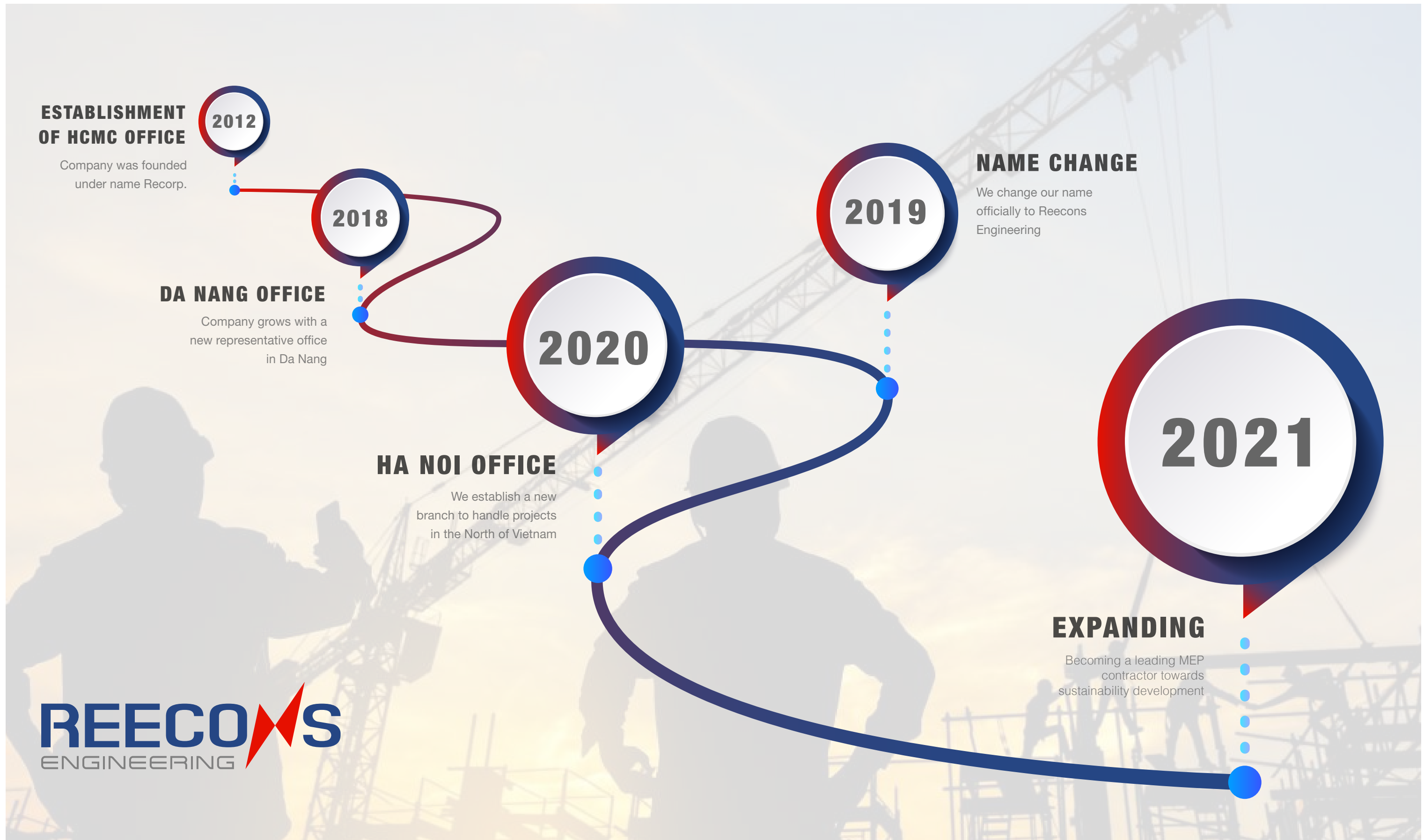
Contact Information	94
---------------------	----

An aerial photograph of a city skyline at sunset. The sky is filled with dramatic, colorful clouds in shades of orange, pink, and purple. Several prominent skyscrapers are visible, including one with a distinctive pointed top on the left and another with a spire on the right. The city lights are beginning to glow, reflecting on the water in the foreground. The word "OVERVIEW" is overlaid in a white box on the right side of the image.

OVERVIEW



HOW WE BEGAN?



OUR COMMITMENT



The success of our projects is not only measurable through our clean indicators on safety, quality and delivery timing, but also consists in reaching environmental sustainability and carrying social responsibilities.

Mr. Le Van Tuan / Managing Director

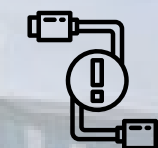


YOUR SATISFACTION

Reecons is envisioned to extend its business to foreign markets and international investors in Vietnam and provide optimal design and construction solutions in respect of the following commitments



100% SAFE HOURS
during execution



0% DEFECTS
at handover



100% ON TIME DELIVERY
following project schedule

BUSINESS VALUES

1 MISSION

Continuously providing sustainable MEP technical solutions and construction services with the fastest execution, while always ensuring safety and quality according to local and international standards with the goal of bringing peace of mind and satisfaction for clients. Reecons contributes to the improvement of production and business efficiency and ensures comfort, well-being, and safety for the end-users.



BUSINESS ETHICS Honesty - Dedication

2 VISION

To become the leading, reliable MEP contractor providing sustainable solutions from simple to complex design, installation and maintenance services in Viet Nam and South-East Asian Region.



3 CORE VALUES

PROACTIVENESS

Constantly preparing and proactively seeking the best solutions to any challenge. Continuous improvement empowers us to grow in order to exceed clients' satisfaction.

COOPERATION

Being open-minded and expressing ourselves clearly in communication, always listen and comprehend. Willing to exchange information, ideas, and assisting each other to grow.

COMMITMENT

Committing to fulfill our promises and accompanying clients and partners to the success.

INTEGRITY

Keeping honesty in communication and at work. Forbidding to conceal the truth or to do bribery and embezzlement in any manner.

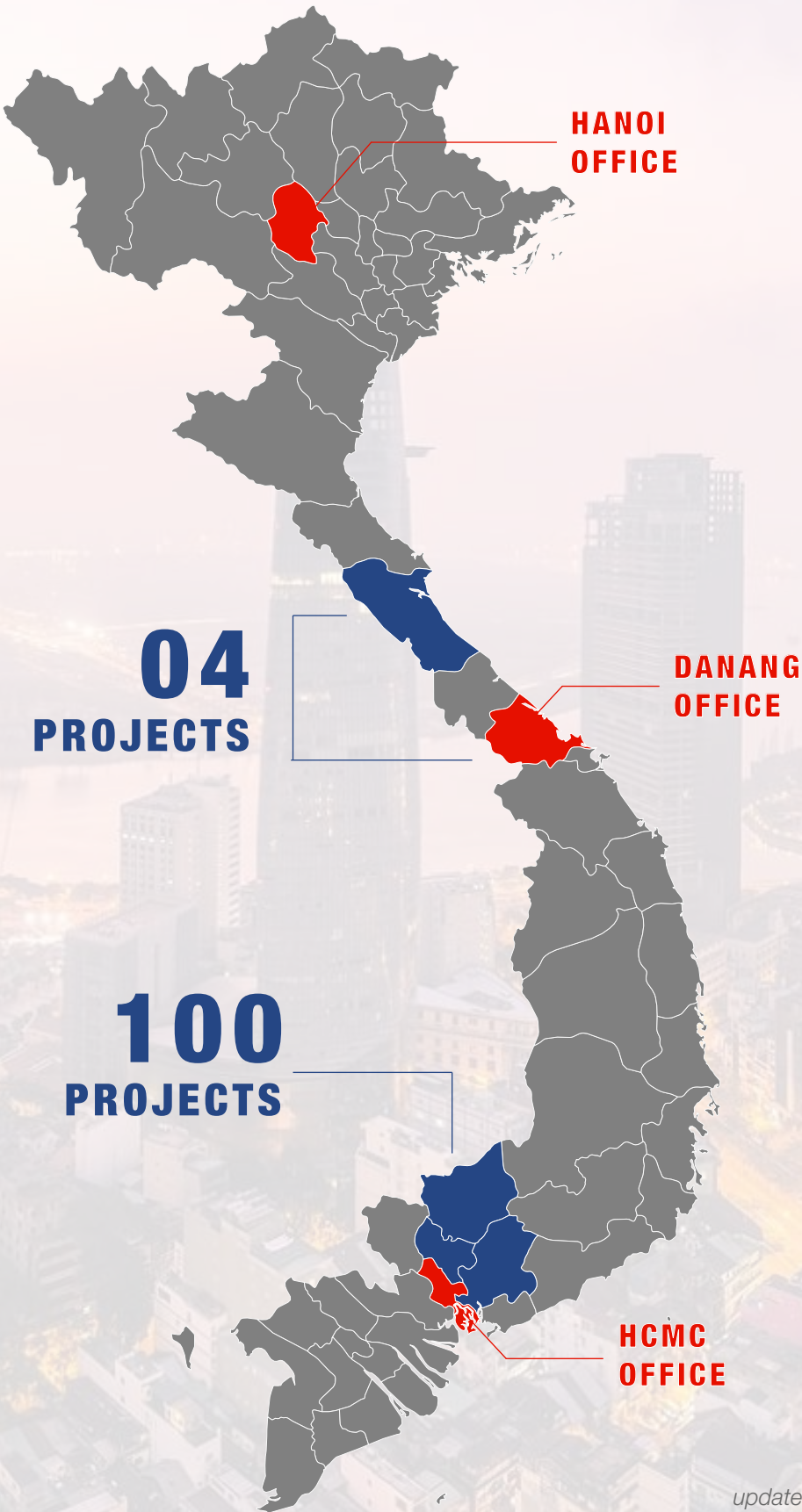
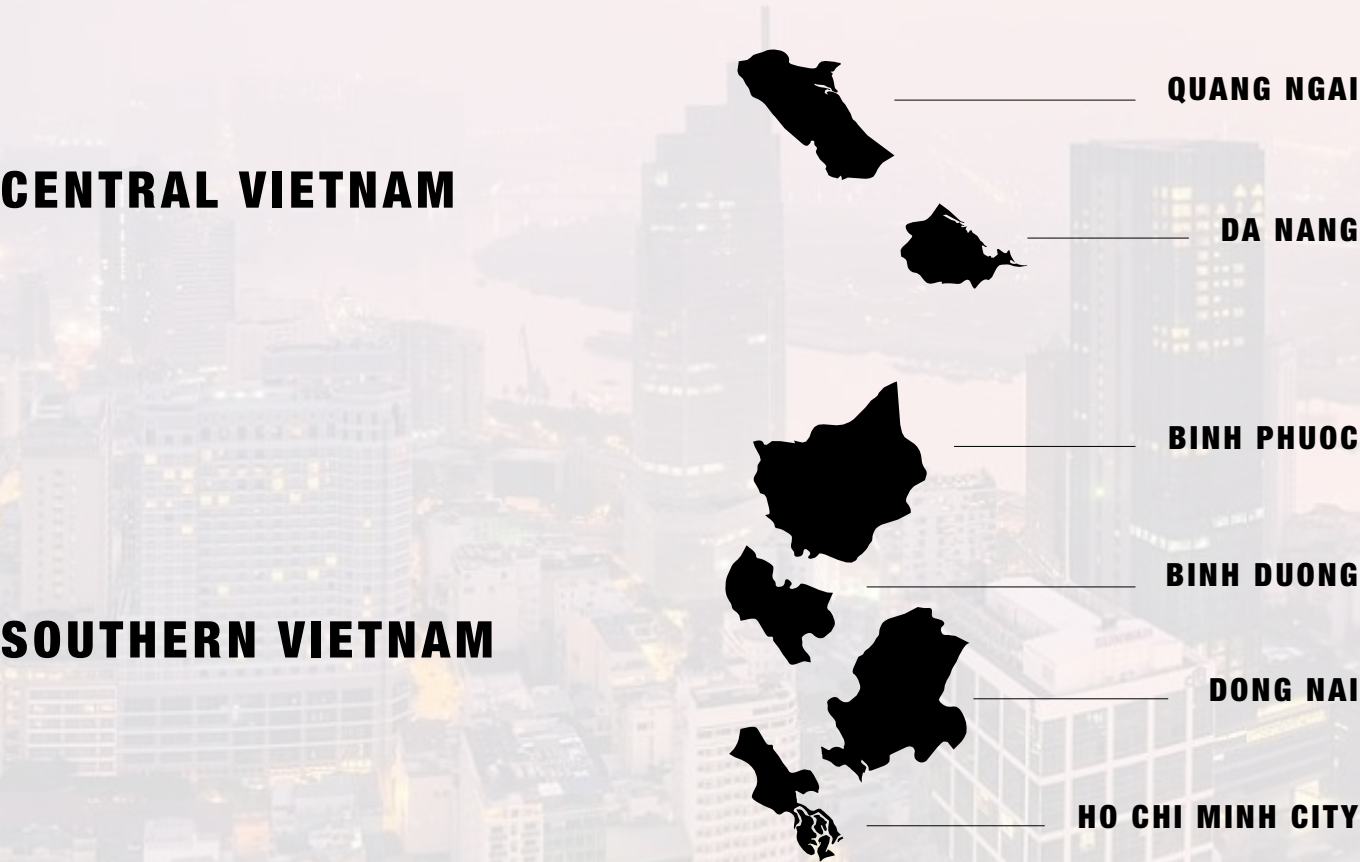


BUSINESS ACTIVITES

Reecons is a General Contractor founded in May 2012. Since then, Reecons has completed more than 66 high-end and sustainable projects including industrial, commercial and residential buildings.

To be in pace with the current trends in building design and construction, Reecons boldly adapted along with its partners sustainable design and construction in line with Lotus (VGBC), GreenMark (SGBC), LEED (USGBC) and Excellence in Design for Greater Efficiencies (EDGE) requirements to serve financial interests of our client while guaranteeing high-quality projects and preserving the environment.

Wisdom, knowledge, expertise, innovation and flexibility of collaborators drove rapidly the growth of the company in just a few years. Reecons is now one of the leading contractors in Vietnam.



updated on 26/08/2021



SCOPE OF BUSINESS

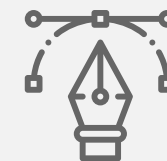


IN A NUTSHELL



MEP EXPERTISE

Along 10 years of growth, Reecons provides complete installation, commissioning and maintenance services for mechanical, electrical, plumbing and firefighting systems of various projects across Vietnam, implemented by our in-house engineering and construction resources. Customers and collaborators greatly appreciate our finishing quality, respect of schedules, on-site health and safety policies application, and investment & operation optimized engineering solutions.



DESIGN AND VALUE ENGINEERING

In different phases, from design concept to construction drawings, Reecons has become experts in providing design services by well-trained professionals, bringing innovative ideas, significant value engineering for cost reduction, quick processing of permits and reviews to contractors, partners, and owners in accordance to both local and international standards in the coordination of BIM Modelling.



MAINTENANCE

Reecons provides preventive and reparative maintenance by trained engineers to ensure the system's maximum continuous efficiency, in line with our dedication to high standards and expectancy.

DESIGN & BUILD APPROACH

Our experienced and well-trained engineers and project managers provide turnkey solutions with an efficient design & build approach.

Being a single point of responsibility allows us to conduct our projects without boundaries, communicate instantaneously, thus significantly reduce the time to complete the project, compared to the traditional approach.

Reecons' designs include drawings, specifications, bills of quantity and calculations in accordance with local & international standards, requirements and visions of our clients.

Our philosophy for sustainability leads in the broad sense (financial & environmental) leads us to constantly challenge building technologies and processes.

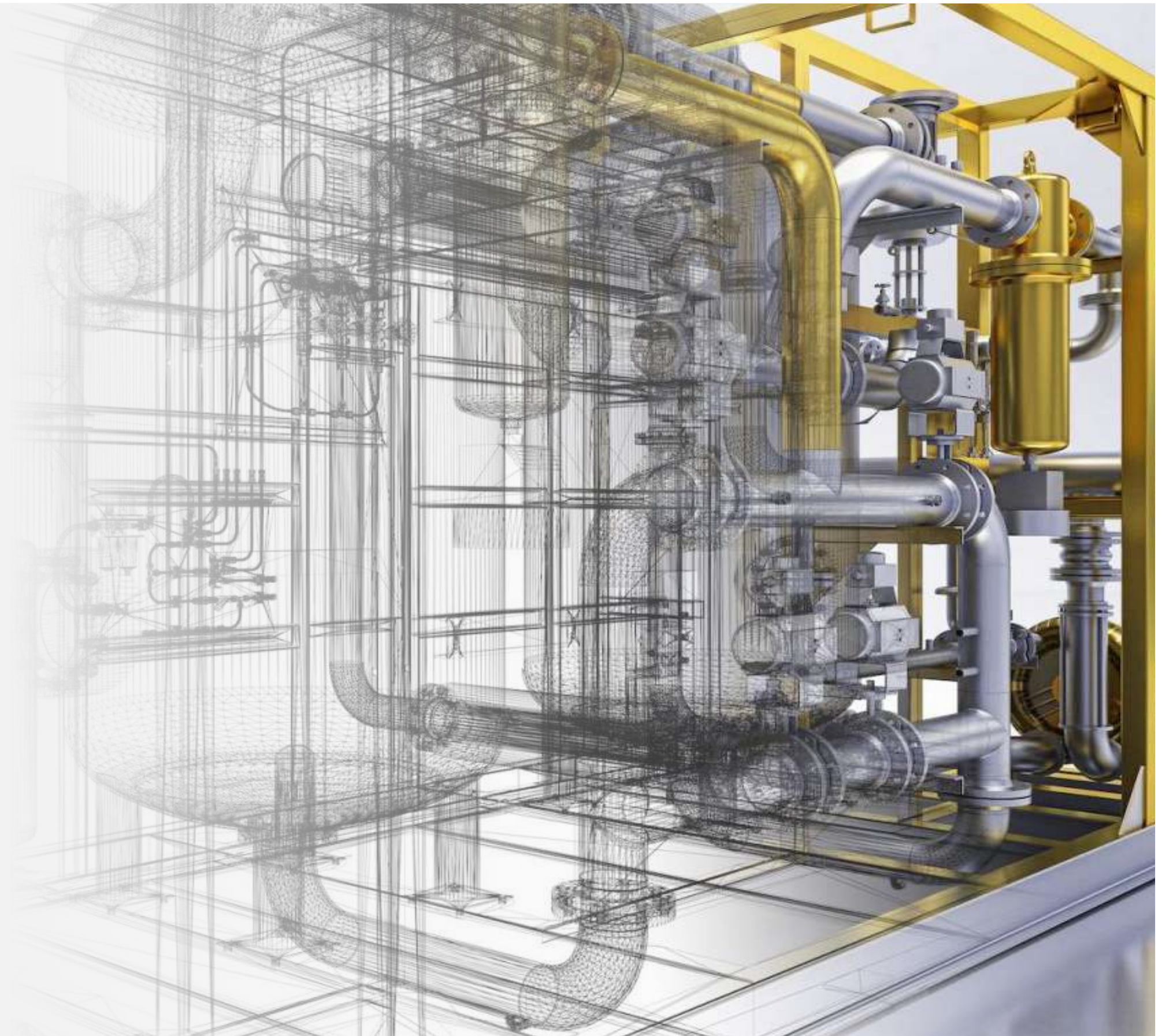
BUILDING INFORMATION MODELING (BIM)



Since 2017, as part of our effort to grow with multi-disciplined services, Reecons has trained and empowered our Engineering Department to deliver design and value engineering through building information modeling (BIM).

Through 5 years of implementing BIM in our projects, we are able to detect, diagnose, and fix constructability problems before construction starts. This benefits the project timeline, possible maintenance & audit works and contributes to reducing construction costs for the investors.

We understand that each client has different requirements, so from the beginning, our solutions are customized to fit each project. From planning and design to construction and operation, our engineers provide assistance through the whole project life time.



1 OPTIMAL DESIGN

POWER SYSTEM ANALYSIS

Implementing the analysis of the power system allows to conduct a phase analysis of each component, track the voltage of different buses, the actual and reactive power flow between buses, plan the potential expansion of the current system and analyze the system under different conditions of failure and on the basis of different scenarios.

HEAT LOAD CALCULATION

With heat load measurement, we calculate many aspects in order to find the appropriate system capacity for optimal performance and comfort, and come up with a system that consumes less energy, achieves better results, and lowers monthly operating costs.

HYDRAULIC CALCULATION

Implementing the hydraulic calculation allows to determinate the need for hydraulic supply and the water pressure needed to sustain the necessary flow, leading to the correct size of pipes and equipment will be selected based on the analysis.

RELOCATION OF EQUIPMENT & ROUTING CONNECTION

Spotting the optimized location and routing connection, we ensure easier maintenance and reduce safety issues inducing a huge saving on the cost for piping, valves, ducts, etc. for investors.

MATERIALS & EQUIPMENT SELECTION

The selection of materials and equipment is made to find the environmental and energy-efficient materials with best practices in order to avoid oversizing and overdesigning based on the market and local conditions.



2 ENERGY SOLUTIONS

ENERGY EFFICIENCY

The selection of the main equipment considers energy efficiency relatively to the project's objectives, through the evaluation of respective coefficient of performance (COP) - but more importantly as a whole, as single facilities are related and impact on each others.

LIGHTING

Numerous control types are used to operate lighting system, including switches, occupancy and photosensors, and other automatic control systems to manage lighting along with other facilities, with the objective of improving energy savings, productivity and well-being of building users.

HVAC

Different solutions from using well-insulated pipes, ducts, and outlets to trap in all the heated or cooled air to and preserving airflow and choosing a right type of air conditioning system that could contribute greatly to the operation cost of a property.

POWER MONITORING SYSTEM

The power monitoring system provides the data required for important energy management such as capacity analysis of electrical panel, troubleshoot of circuit breaker trips, detection of energy costs and uncovered energy waste.

3 BRANDS & VENDORS

AFFORDABLE BRANDS WITH EQUIVALENT QUALITY

We offer methods of evaluating the entire engineering strategy based on market experience to find out whether there is a possibility of proposing a better brand name, a better price but still qualifying the same requirements.

VENDORS WITH GOOD SERVICES & FAST DELIVERY

With a physical inventory of the equipment & vendors on hand, we propose different options along with good after-sale guarantee and maintenance services, fast responding and close to the construction site to reduce the cost and time of delivery.



WE PROVIDE

Complete engineering, design & build, full support for any size project from concept designs up to project completion and commissioning.

01

MECHANICAL

- HVAC System
- Central Chiller
- VRF system
- Split type system
- BMS / CMS

02

ELECTRICAL

- Medium and High Voltage
- Low and extra-low Voltage
- Main Feeder
- Lighting
- Generator
- Earthing & Lightning
- Data & Telephone
- CCTV & Security
- CATV / MATV

03

PLUMBING

- Plumbing
- Sanitary
- Sewage
- Water Treatment (STP, WWTP)

04

FIRE FIGHTING

- Fire Alarm
- Sprinkler
- Hosereel
- Foam Fire Fighting
- Gas suppression (FM 200, CO2)

05

PROCESS

- Gas piping
- Gas tank installation
- Process ventilation
- Process cooling water
- Utility piping (steam, compressed air)

06

MAINTENANCE

Reecons offers 24/7 MEPF system comprehensive and preventive maintenance services

SPECIFIC MEP EXPERTISES

PROJECT CERTIFICATES

Project certification has been an important factor in determining project quality. To assist you in getting certification for your project, Reecons has gained the experience to appropriately apply all of the criteria while keeping the cost of execution in mind. Our engineers are constantly trained and certified in order to create designs with proper dimensions and specifications while providing easy and smooth authorization.

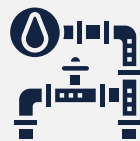


We handle every aspects of a project from design to construction, maintenance and upgrading systems with our historical background as a MEP expertise.

DESIGN AND CONSULTANCY

SUPPLY AND INSTALLATION

MAINTENANCE & WARRANTY



INDUSTRIAL PROCESS

Reecons has assembled processing systems and equipment for a diverse range of clients and industries. Our engineers are capable of dealing with both traditional and high-tech processes and provide reliable and cost-effective solutions for the various domains.



COLD STORAGE

To contribute to significant difference to your business, Reecons pays attention to design aspect and value engineering to perform design optimization, cost-saving solution and proper equipment & material selections, leading to a significant drop in energy use and monthly utility bills.



DATA CENTRE

Reecons, in cooperation with other project stakeholders, support to provide possibility of power & cooling demand optimization, sustainable alternatives, in accordance with NFPA, UL/FM, Uptime Institute's Tier Standard in both design and operating standards.



CLEAN ROOM

To prevent particulate contamination and control other environmental parameters Reecons develops comprehensive approach to clean room technology that is tailored to your facility's needs to ensure the environment is properly managed, monitored, and stored.

Please refer to Reecons' **Specific Expertises & Innovation** for more details & references

MAINTENANCE



OUR GUARANTEE AFTER CONSTRUCTION

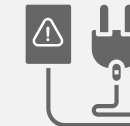
In addition to our internal effort for quality and 0% defect commitment, we provide a guarantee of free maintenance up to 2 years after completion of all our projects.

Our dedicated maintenance team excels on both preventive and reparative maintenance and keeps on continuous training on the evolution of technology.

Among the defects cover by our maintenance services, the most common and critical ones are



Pressure Loss



Short Circuit



Corrosion



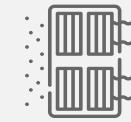
Flow Unbalance



Heat Loss



Pipe Obstruction



Dirt in filter



Noise & Vibration



A THOROUGH **PREVENTIVE MAINTENANCE** ALLOWS TO ANTICIPATE THE RISK OF DISRUPTION THAT COULD AFFECT THE OPERATION AND RESULT IN HIGH REPARATIVE MAINTENANCE COSTS

PROFESSIONAL MAINTENANCE SERVICE

Reecons provide the professional maintenance service to help you inspect and evaluate your project to determine risks, maintenance plans, necessary remediations, etc. The maintenance works are performed by a dedicated maintenance team specialized in various disciplines.

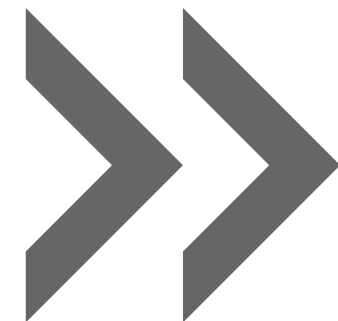
With a long-term maintenance contract, we guarantee peace of mind to our clients and partners by keeping your project functional and livable.



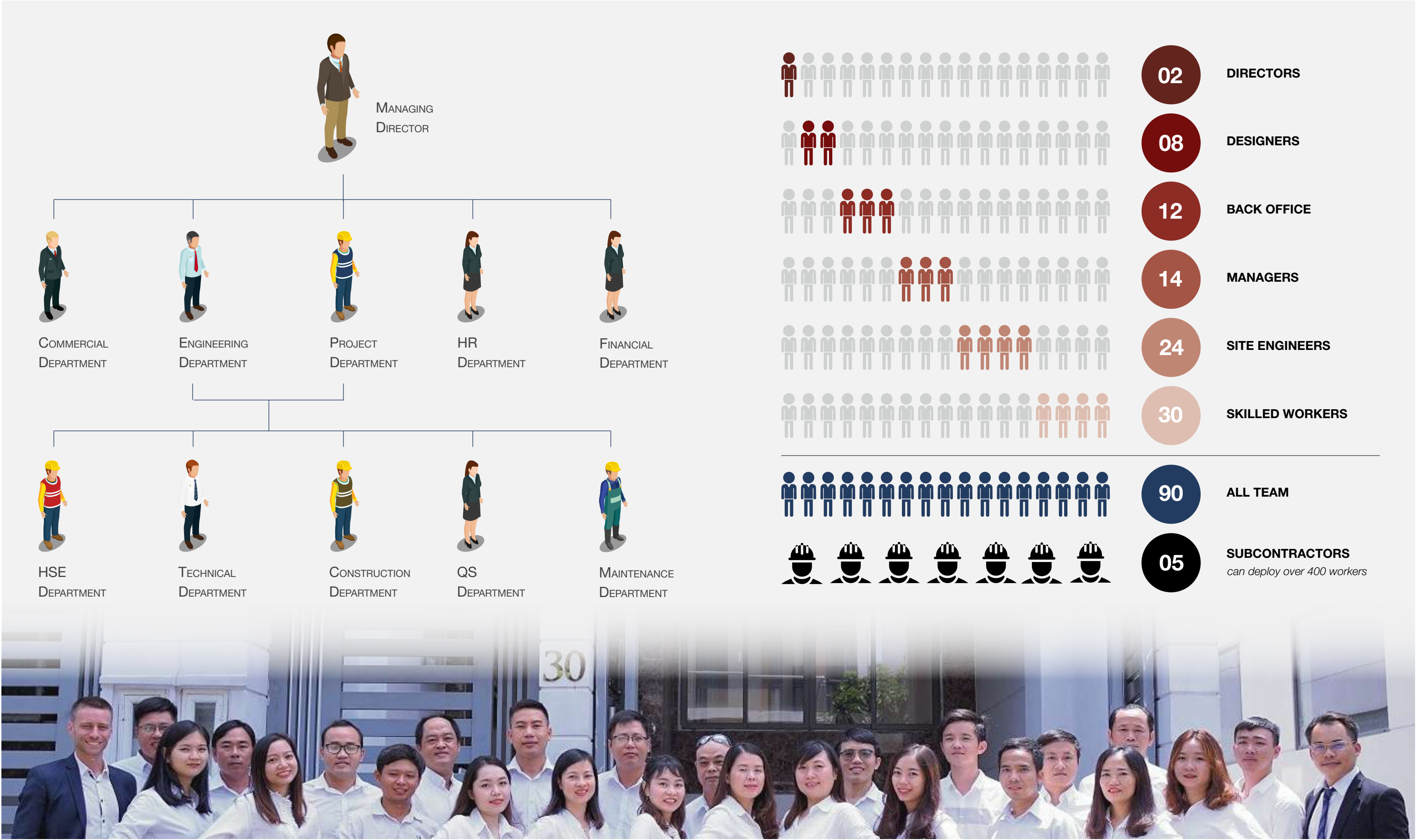
Please refer to Reecons' **Maintenance** profile for more details

A photograph of an industrial facility, likely a refinery or chemical plant, featuring a complex network of large, polished metal pipes and machinery. The scene is brightly lit, with strong reflections on the metallic surfaces. The pipes are arranged in a dense, organized manner, with some running horizontally and others vertically. The overall color palette is dominated by metallic blues and greys.

ORGANIZATION & RESPONSIBILITY



ORGANIZATION CHART



KEY PERSONS



TUAN LE
Managing Director

For more than 20 years, Tuan has been involved in the construction sector — first as Project Engineer, then as Project Manager & Deputy General Director of Alliance; IEC Engineering, and most recently as Managing Director for Reecons Engineering. Tuan has led his business to be one of the top MEP Contractors on the market with strong determination and wisdom to compete with big construction corporation. In recent years, Mr. Tuan focuses on team development to sustain the operations of the company and to provide solutions for sustainable development in the real estate market.



THANG HO
Project Manager

After graduating B.E Electrical Engineering in 2005, Thang started his career in Vietnam, as an Electrical Site Engineer in MEP industrial construction. From 2005 to 2022, Thang worked for SEAREFICO JSC as Electrical Site Engineer, Site Manager, Project Manager, MEI Deputy Director and then MEI Director Manager. In 2022, he joined in Reecons company as a Project Manager and develop the Construction Department. During his 17-year of experience, he has done different types of project from building to industrial. In particular, Radisson Blu Resort Cam Ranh, Mega Mall Thao Dien Project, Diamond Island Project, AB Tower Project, Vinamilk Office Tower Project, etc.

YOAN GUYON
Director of Business Development

After graduating Master of Engineering in France in 2009, Yoan started his career in Vietnam, as a project manager on industrial construction sites. From 2011 to 2014, he established the Vietnam branch of ELITHIS, a French consultant in Energy Efficiency. In 2014, Yoan joined Boydens Engineering to develop the Energy Consulting department and then finally settled a new office in HCMC and turned into Business Development Director in 2016. He integrated Reecons Engineering in 2020 in charge of Business Development for the expansion towards FDI and regional markets.



TOAN NGUYEN
QS Manager

After graduating Bachelor of Electrical Engineering in Vietnam in 2013, Toan started his career in HCMC – Vietnam, as a Electrical engineer in MEP industrial construction sites. From 2013 to 2018, Toan work for TTCL Vietnam Corp as Electrical engineer. In 2018, Toan joined Reecons company as a Electrical Engineer and QS Manager



HUY TRAN
Technical Manager

In 2010, Huy graduated Bachelor of Electrical Engineering, Afterwards, he started his career, as a electrical engineer in MEP industrial construction sites in the South of Vietnam. From 2010 to 2021, Huy worked for Omega Automation Co., Ltd, Kinden Vietnam Co., Ltd, Searefico Company, Kandenko Co., Ltd, Shin Nippon Air Technologies Co., Ltd as electrical engineer, Site manager, Project manager, ME Assistant Manager, M&E Manager. In 2021, Huy joined Reecons Engineering as Technical Manager and to develop the technical department.



VAN NGUYEN
HSE Manager

After graduating from Ton Duc Thang University, major in Safety Engineering, Van started his career as a Safety Engineer. From 2011 to 2019, Van worked for GS E&C Corporation and Takenaka Vietnam as a Assistant HSE Manager, Fuctional HSE Manager and HSE Manager. In 2020, Van joined ReeCons Engineering as HSE Manager and to develop QHSE Department. With more than 13 years of experience, he has good knowledge of setting up HSE Management System, and imparting knowledges and experiences to HSE Engineer so that they can control HSE on site successfully.

QUALITY MANAGEMENT

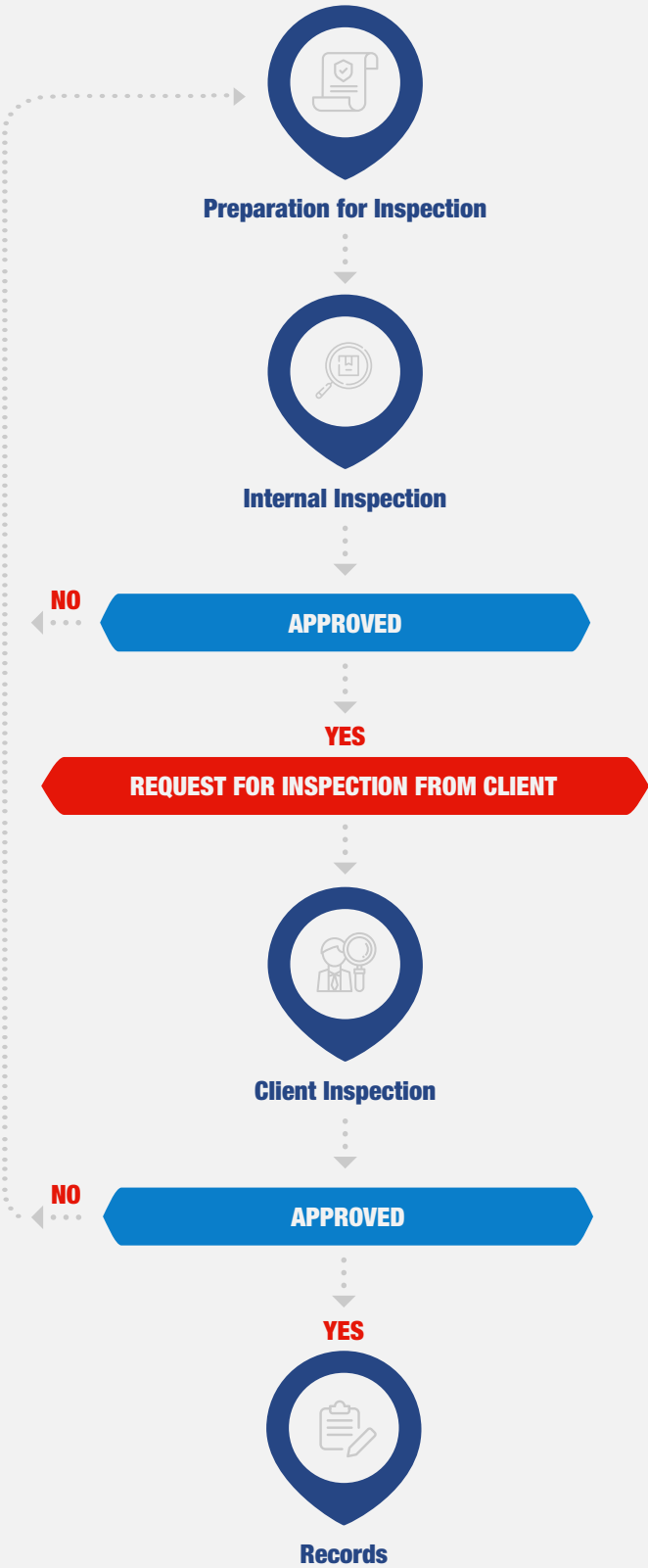


QUALITY MANAGEMENT SYSTEM



Quality is important to our business because we value our customers. We aim to provide services for our clients that meet and even exceed their expectations.

We are dedicated to continuous improvement and have set up a quality management system that offers a framework for our output to be evaluated and enhanced by regular gathering and monitoring from customer feedback, training and growth our employees, periodic audits of our internal processes, measuring quality goals that reflect our business objectives, reviewing audit results, customer reviews and complaints by the top management.



SAFETY MANAGEMENT



POLICY

HSE Policy is signed by our Managing Director and committed by Top Management throughout the implementation of the construction process to ensure a safe and healthful workplace for all our employees. With the mission of focusing on employees occupational health and safety and commit to protecting the environment, Reecons officially announces our HSE policy as the following

1. To comply with legal requirements and any other requirements that relevant to occupational health and safety as well as environmental aspects.
2. To ensure occupational health and safety for employees and prevent occupational diseases that affect employees' health in the working process.
3. To protect the environment and the safety of the local community.
4. To promote awareness, participation, and consultancy of employees for HSE issues.
5. To provide an adequate resource to ensure operational performances along with all requirements and to maintain and continually improve the HSE management system in accordance with the standards ISO 14001:2015 and ISO 45001:2018.


Le Van Tuan
Managing Director

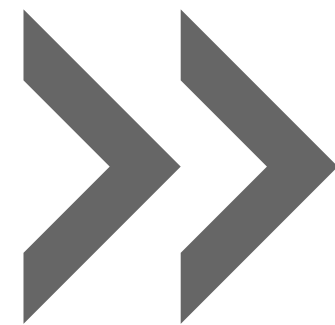
HSE MANAGEMENT SYSTEM

HSE Management System (HSEMS) complies with Vietnam's legislation and refers to the quality management process to incorporate into the HSE management approach. Utilizing this process allows the project to maintain a continual improvement cycle. These improvements are expected to be realized by the reduction of onsite risks in a systematic manner.





PERFORMANCE



BUSINESS SECTORS



WE KNOW WHAT CONCERNS YOU

As a trusted companion, we support your business development and provide outstanding talents to focus on a deep knowledge of the sectors in which your business works. The understanding of the particular problems related to different sectors make us a preferred partner of different businesses aiming at leading position on their market.



MANUFACTURING

- Fast-moving consumer goods (FMCG)
- Food & Beverage
- Pharmaceutics
- Electronics
- Furniture
- Textile & Footwear
- Mechanical Components
- Iron & Steel
- Chemical Products
- Cattle Food
- CNC Machines



INDUSTRIAL PARK

- Infrastructures
- Ready-built Factories
- Ready-built Warehouses



REAL ESTATE

- Hospitality & Residential
- Retail & Commercial
- Healthcare
- Administration buildings



REGULAR CLIENTS



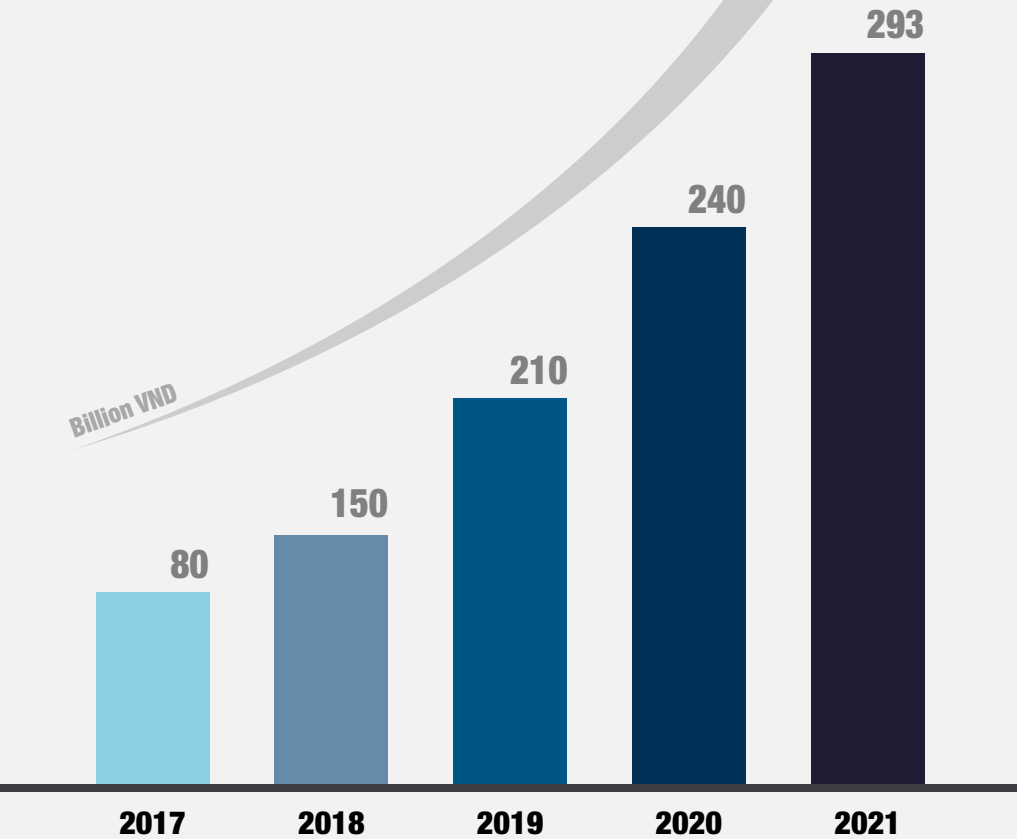
ANNUAL REVENUE

Good progress has been made in the last 5 years, with key operating and financial metrics improved significantly. We proudly delivered good business results in profitability and annual revenue through our great efforts in:

Actively managing our profile: we sharpened Reecons' strategic focus on safety, schedule, and efficiency of projects.

Accelerating innovation: sciences and technologies are fundamental to empower us in anticipating changes of construction trends.

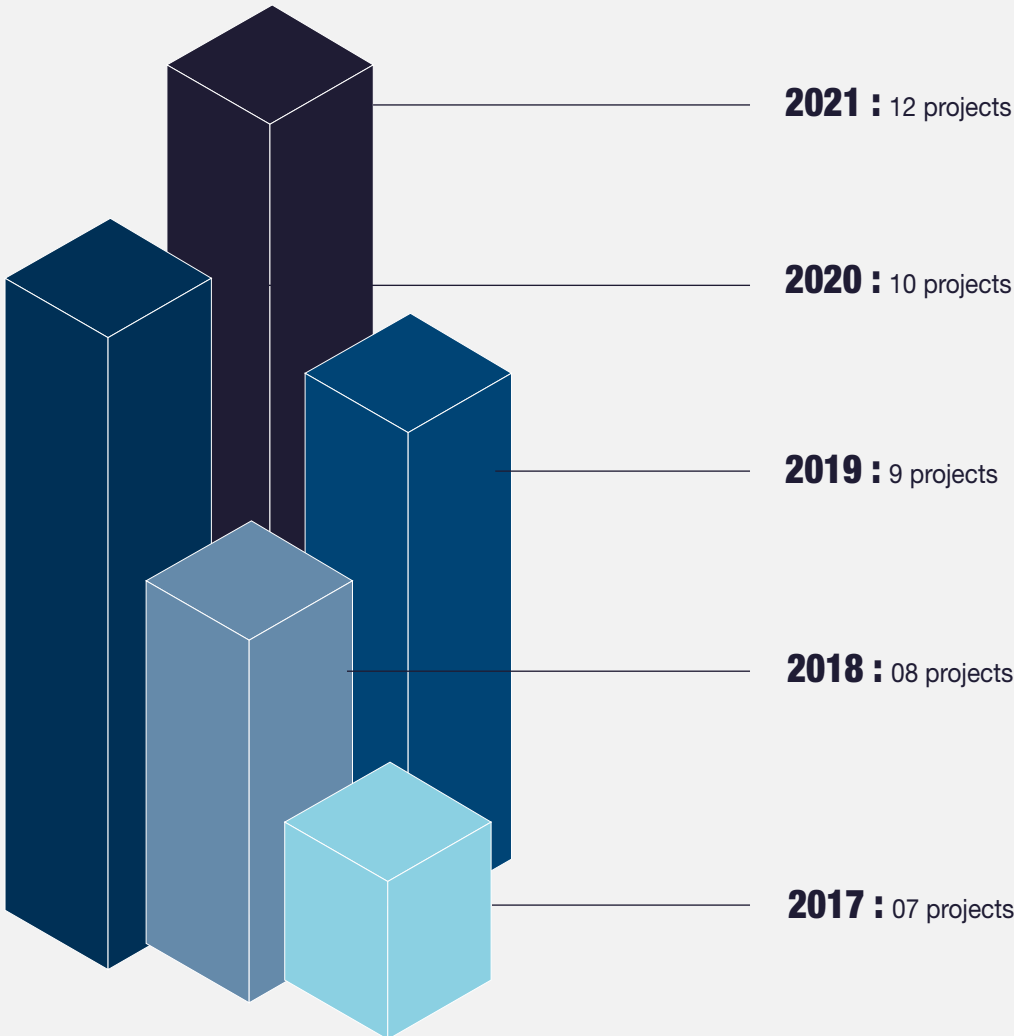
Taking leadership role in sustainability: we accelerated actions to make substantial progress in our projects when suitable technically and financially.



PROJECT SIGNED

The number of projects signed over the last 5 years has steadily increased. Reecons has earned the confidence of many customers and partners by maintaining a solid technical record, good reputation and continuous improvement, improving our position on the market to successfully win various types of projects.

We envision to increase our presence in the real estate sectors including commercial, hospitality and residential while reserving experience in the industrial market.



RECOGNITION

CONSTRUCTION CAPABILITY CERTIFICATE GRADE I

Ministry of Construction, Southern Department has issued Certificate of Construction Capacity No. BHCM-00007575, signed on August 27, 2021 for Reecons Engineering to recognize the capacity in the field of Construction for Industrial project equivalent to Grade I.



SAFETY & QUALITY PERFORMANCE REWARDS



In every project, quality & safety are our prioritized commitments in order to maintain the project realization as promised. After the project handover, we are always honored to receive incentives from clients as an acknowledgment of our accomplishments during the construction period.

ISO ACCREDITATION

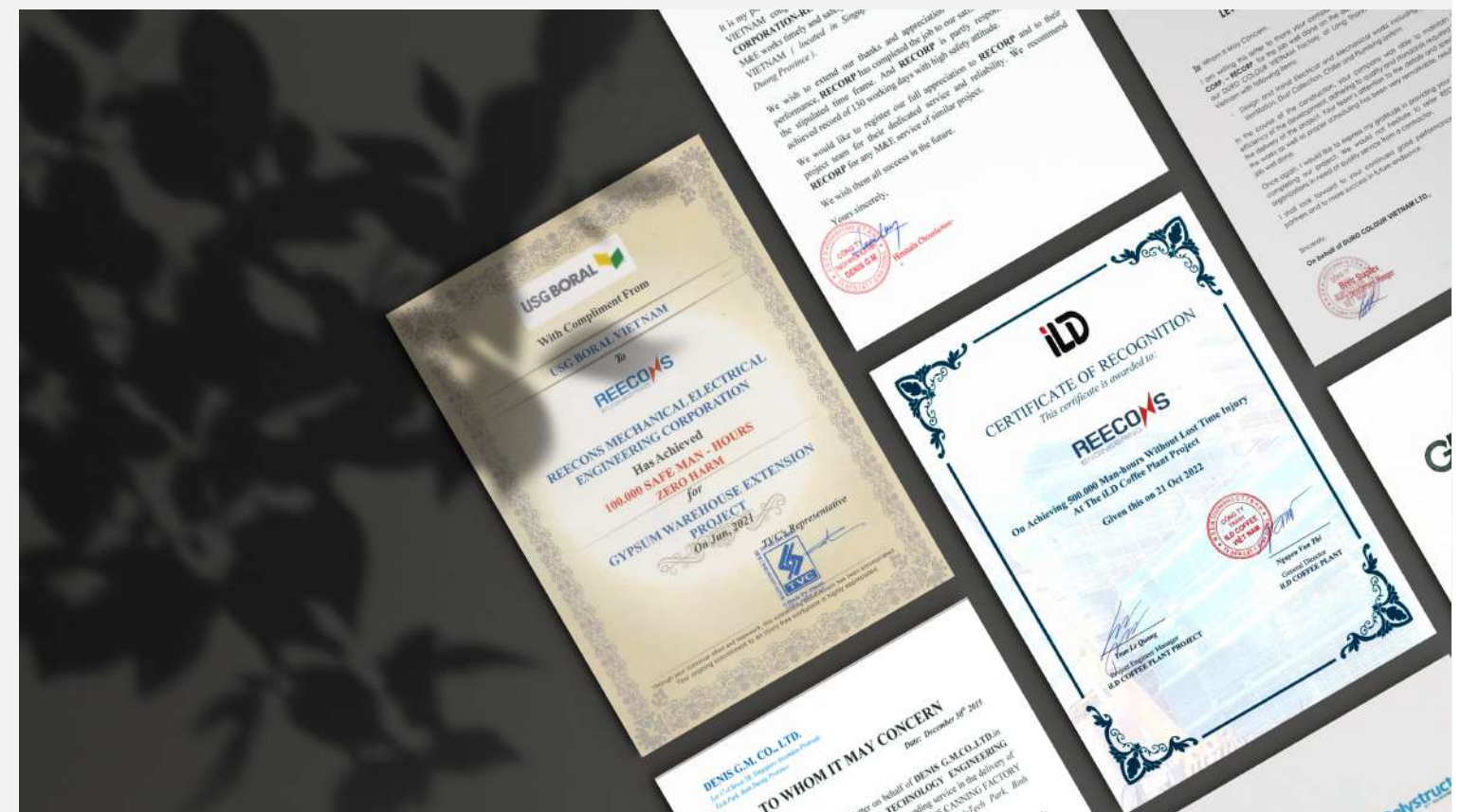
We demonstrate our compliance and commitment to industry-respected practices by achieving

- **ISO 9001:2015 certification** for Quality Management System
- **ISO 14001:2015 certification** for Environmental Management System
- **ISO 45001:2018 certification** for Occupational Health and Safety Management System



We are appreciated by the clients for successfully maintaining the efficiency of project development, adhering to the quality and standards required for the delivery of the projects as well as paying attention to the details and specificities of the works.

RECOMMENDATION LETTERS



OUR CLIENTS

OUR PARTNERS























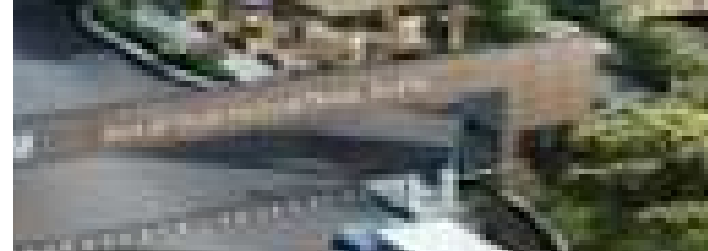
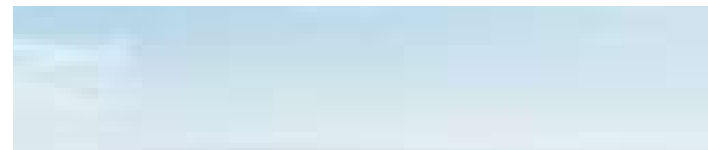






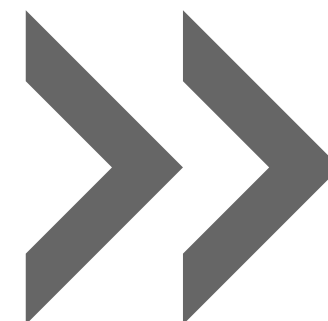






REFERENCES

INDUSTRIAL PROJECTS



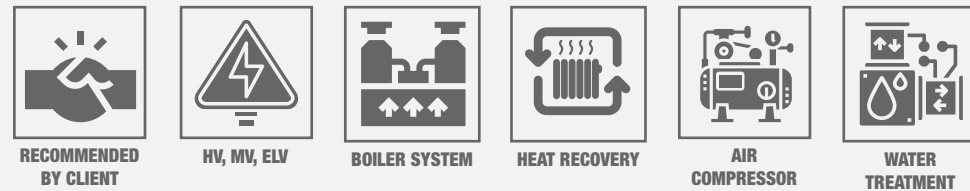


HAYAT FACTORY VIETNAM

BECAMEX BINH PHUOC, VIETNAM

CLIENT:	Hayat Kimya Company Limited
SCALE:	50,000 sqm
CONSTRUCTION PERIOD:	6 months
SCOPE OF WORK:	Design Development & Build - Full MEP Package
SECTOR:	Tissue, Wet Tissue, BabyCare Products

PROJECT FEATURES



PROJECT DESCRIPTION

Hayat Kimya is one of the world leaders in baby diapers, home care products, sanitary napkins. For their development in South East Asia, Hayat Kimya chose Vietnam as the location of their first production site and selected Reecons Engineering for the full MEP installation over big names in this industry.

Despite the fact that delivery of most of the main equipment imported from Europe and USA was subjected to delay due to the Coronavirus pandemic, and with a design made by the client's Turkish partner necessary to adapt to the local standards and codes, Reecons Engineering had to show anticipation, pro-activeness and pragmatism to lead a fast clarification discussions with Hayat's foreign experts and mobilize an exceptional workforce to catch up with the tight 6-month deadline.

The MEP package includes the installation of 5 transformer stations of 12.5 MW, 2.5MW and 1675KVA LV generators, HV and LV Switchgear Blockset imported from France, busway system and special LSHF cables, lighting bus-bar, 10 chillers + 4 heat recovery chillers, heat-pump for hot water production, SUS piping up to 500mm diameter, boiler and compressed air system including air dryer and filtration, and a water purification system. Fire Fighting system follows NFPA and UL/FM standards.



UNIVERSAL ALLOY FACTORY

DA NANG, VIETNAM

CLIENT:	Universal Alloy Corporation (UAC)
SCALE:	82,000 sqm
CONSTRUCTION PERIOD:	7 months
SCOPE OF WORK:	Design Development & Build - Full MEP Package
SECTOR:	Mechanics for Aviation



PROJECT DESCRIPTION

Universal Alloy Corporation developed their first facility for aerospace components in Da Nang. Reecons was selected as Design & Build contractor for the MEP package of the project, complying with the combined safety requirements of the general contractor Dinco and the UAC Investor.

Reecons handled all electrical, HVAC and lighting systems. Water supply for industrial processes, including steam system for surface treatment area, drainage system, wastewater treatment sub-station. For the surface treatment factory area, the investor wished to have 1-month shorter, to which Reecons responded positively by increasing resources and materials delivery schedule (air freight) at its own costs.

As a result, despite the COVID-19 epidemic that slowed down equipment import process, Reecons handed-over the project in advance. All systems operate stably on the base of our design.

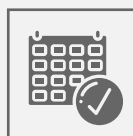
PROJECT FEATURES



VALUE
ENGINEERING



ACHIEVED
SAFETY HOURS



ADVANCE
DELIVERY



DENNIS CANNING FACTORY

PROTRADE INTERNATIONAL TECH PARK, VIETNAM

CLIENT:	Dennis G.M. Company Limited
SCALE:	35,400 sqm
CONSTRUCTION PERIOD:	5 months
SCOPE OF WORK:	Design & Build - Full MEP Package
SECTOR:	Canning Food Products



PROJECT DESCRIPTION

Denis Group decided to develop a new food factory in Binh Duong Province. After 4.5 months of construction, the MEP for whole project – including food processing factory, canteen, office and waste water treatment plant was successfully completed to meet HACCP and GMP requirements.

The boiler system was executed by Reecons as well with top quality valves imported from Japan, high quality welding joints made by Reecons' qualified skilled workers, all along with a quick method statement to save time & cost for the client.

PROJECT FEATURES



RECOMMENDED
BY CLIENT



VALUE
ENGINEERING



ACHIEVED
SAFETY HOURS



ADVANCE
DELIVERY



BOILER SYSTEM



WATER
TREATMENT



MAPLETREE LOGISTIC PARK

VSIP II - 2A BINH DUONG, VIETNAM

CLIENT:	Mapletree Vietnam Management Consultancy
SCALE:	58,800 sqm
CONSTRUCTION PERIOD:	6 months
SCOPE OF WORK:	Full MEP Installation
SECTOR:	Ready-built Warehouse

mapletree



PROJECT DESCRIPTION

The project includes 4 warehouses as one of the largest logistics project in the VSIP II.t

Reecons installed M&E systems such as main power, lightning protection, CCTV and water supply, plumbing systems to meet the high standard requirement of Client, all by respecting the aesthetic aspect of the project.

As a result, Reecons claims a total success on this project with:

- 120,000 safe hours
- Catch up on schedule, more than 1 month in advance
- High technical and aesthetics standards, approved by client

PROJECT FEATURES



ACHIEVED
SAFETY HOURS



ADVANCE
DELIVERY

BOUSTEAD READY-BUILT FACTORIES

DONG NAI, VIETNAM

CLIENT:	Boustead Project Company Limited
SCALE:	60,000 sqm
CONSTRUCTION PERIOD:	6 months
SCOPE OF WORK:	Full MEP Installation
SECTOR	Ready-built Factories



PROJECT DESCRIPTION

According to the need to develop rental factories, the Boustead investor has invested in building a system of factories for rent with 05 factories B1, B2, B3, B4 and B5 over 6Ha (phase 1).

Reecons was selected as the D&B contractor for the MEP package, complying with the strict safety requirements and delivered the project on time. The following systems were installed: 22kV medium voltage system, 4 sub-stations 1500kVA and 1 sub-station 1000kVA, Switchgears (DS, Re-closer, RMU), electrical system from MSB to DB distribution, lighting sources, pumping stations, Fire Protection system (Fire Alarm & Fire Fighting system), CCTV, ELV (Data & Telecom), plumbing and sanitary systems.

All our systems operate stably on the base of our design.

PROJECT FEATURES



ACHIEVED
SAFETY HOURS



HV, MV, ELV



BOSCH VIETNAM FACTORY

DONG NAI, VIETNAM

CLIENT:	Bosch Vietnam Company Limited
SCALE:	8,800 sqm
CONSTRUCTION PERIOD:	4 months
SCOPE OF WORK:	Electrical Installation
SECTOR	Electronics Production



PROJECT DESCRIPTION

Bosch's existing factory in Dong Nai went for an upgrade of its facilities for 3 of their assembly cabins. Reecons was awarded to execute the Electrical system following the strict internal safety regulation of Bosch, while ensuring on-time delivery despite a very tight given schedule.

With our strength and experience on international hi-tech projects, Reecons handled successfully this valuable project with the following installed systems: additional HV switchgear imported from Germany to be connected to the existing and in-operation HV switchgear, integrated transformer station, bus-way system to the MSB, power cable and ladder, high bay lighting, and instrument and control systems.

PROJECT FEATURES



VALUE
ENGINEERING



MAKINO TECHNICAL CENTRE

SAIGON HIGH-TECH PARK, VIETNAM

CLIENT:	Makino Vietnam Company Limited
SCALE:	10,400 sqm
CONSTRUCTION PERIOD:	6 months
SCOPE OF WORK:	Design & Build - Full MEP Package
SECTOR:	CNC Machines



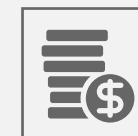
PROJECT DESCRIPTION

With its headquarters in Japan, Makino is a world leader in advanced CNC machining centres. The Makino Vietnam Technology Centre was built in Hi-tech park in HCMC.

Reecons was awarded as the D&B Contactor for the MEP package, complying with the factory standardised requirements for the following installed systems: 1 sub-station 1600kVA, switchgears (DS, Re-closer, RMU), electrical system from MSB to DB distribution, LED lighting sources, pumping stations, Fire Protection system (Fire Alarm & Fire Fighting system), CCTV, ELV (Data & Telecom), plumbing and sanitary systems.

All our systems operate stably on the base of our design.

PROJECT FEATURES



VALUE
ENGINEERING



ACHIEVED
SAFETY HOURS



ADVANCE
DELIVERY



ONSEMI FACTORY RENOVATION

VSIP II, BINH DUONG, VIETNAM

CLIENT:	ON Semiconductor Vietnam Company Limited	
SCALE:	2,000 sqm	
CONSTRUCTION PERIOD:	3 months	
SCOPE OF WORK:	New MSB & Transformer Room	
SECTOR:	Semiconductor	

PROJECT DESCRIPTION

This facility was established in 2013 when Onsemi Corporation assumed control of one of Wonderful Saigon Electric's facilities. Onsemi Binh Duong (OSBD) is a subsidiary of onsemi Vietnam (OSV). The manufacturing facility is to assembly and to test Factory with a total of 4,700 sqm of land area and over 2,700 sqm of building space.

In 2022, with the demand of renovation of the old factory, OnSemiconductor Vietnam has decided to award the package of installation a new MSB and transformer room to Reecons with the instruction of no interruption to the operation activities.

PROJECT FEATURES



VALUE
ENGINEERING




ACHIEVED
SAFETY HOURS



iLD VIETNAM COFFEE PLANT

PROTRADE INTERNATIONAL TECH PARK, BINH DUONG, VIETNAM

CLIENT:	iLD Coffee Vietnam Company Limited	
SCALE:	35,560 sqm	
CONSTRUCTION PERIOD:	5 months	
SCOPE OF WORK:	Fire Fighting system	
SECTOR:	Food and Beverage	

PROJECT DESCRIPTION

In 2021, Louis Dreyfus Company Asia Pte. Ltd. (LDC) signed a joint venture (JV) agreement with Instanta Sp. z o.o. (Instanta) to build and operate a freeze-dried instant coffee plant namely iLD Vietnam Coffee Plant in Binh Duong province, Vietnam with capacity up to 5,000 tons of freeze-dried coffee/year.

With the evaluation from SEAS Consultant and the trust from iLD Vietnam Co., Ltd., Reecons has been awarded the Fire Fighting package for the whole factory land area.

PROJECT FEATURES



ACHIEVED
SAFETY HOURS



FSSC 22000



JAKOB FACTORY EXPANSION

VSIP II, BINH DUONG, VIETNAM

CLIENT:	Jakob Steel Rope System Vietnam
SCALE:	1,269 sqm
CONSTRUCTION PERIOD:	3 months
SCOPE OF WORK:	Design & Build for Civil, MEP Installation and Solar Rooftop
SECTOR:	Rope Steel Production



PROJECT DESCRIPTION

Founded in 1904, Jakob Rope Systems was originally a manufacturer of hemp rope for Swiss farmers. Now, they are presented in over 45 countries and offer an extensive line of products ranging from small-scale sports netting to custom-made steel meshing used in grand architectural projects.

As a leader in sustainable and environmentally-friendly development, Jakob requires different conditions to guarantee the safety of construction work, the aesthetics, and consistency of the structure system, and very important to apply solar rooftop for the expansion factory to encourage green energy in manufacturing.

Reecons Construction was awarded both three package including Design & Build for Civil, MEP & Fire Fighting systems, and Solar Rooftop with a tight project schedule of 3 months to the completion.

PROJECT FEATURES



VALUE
ENGINEERING



ACHIEVED
SAFETY HOURS



SOLAR PANEL



XP POWER FACTORY

BINH DUONG, VIETNAM

CLIENT:	XP Power Vietnam
SCALE:	25,500 sqm
CONSTRUCTION PERIOD:	8 months
SCOPE OF WORK:	Design & Build - Full MEP system
SECTOR:	Transformer Production



PROJECT DESCRIPTION

The Singaporean XP Power transformer manufacturing factory expanded their production capacity with an adjacent factory (Phase 2). Reecons was selected as the D&B contractor for the MEP package of the project, complying with LEED standards and strict safety requirements of the general contractor Boustead and the Investor's representative, and ensuring the hand-over on time.

Among the scope of services: medium voltage system (22kV), 1600kVA station, switches (DS, Re-closer, RMU), back-up generator system (1600kVA) combined with EVN via ATS, electrical system from MSB cabinets to DB distribution cabinets, lighting power supply, HVAC (01 Chiller 450RT, 01 CT, 04 AHUs, 01 SEF, CHWPs, CWP), compressed air system (2 Air compressors, 2 Air Dryers, 1 Air receiver Tank), Fire Protection System (Fire Alarm & Fire Fighting system), all monitored by BMS.

PROJECT FEATURES



ACHIEVED
SAFETY HOURS



BMS SYSTEM



HV, MV, ELV





EMIVEST FEEDMILL VIETNAM

TIEN GIANG, VIETNAM

CLIENT:	Emivest Feedmill Vietnam Company Limited
SCALE:	48,680 sqm
CONSTRUCTION PERIOD:	3 months
SCOPE OF WORK:	Mechanical & Electrical system
SECTOR	Animal Food



PROJECT DESCRIPTION

Emivest Vietnam Co. Ltd. is a member of Emivest Berhard Group (Malaysia) with 100% foreign ownership. Emivest Feedmill Vietnam Co. Ltd started its operation on March 25, 2011, with total investment capital up to approximately 20 million USD.

Their products consist of full range of feed for pigs, broiler, color birds, village birds, layers, ducks, quail... Emivest Vietnam Co. Ltd. has specialized in DOC, broiler, and layer production and have directly imported genetics from countries such as USA, England and France.

Reecons was awarded the Mechanical and Electrical installation package under Cogniplus Main Contractor.

PROJECT FEATURES



ACHIEVED
SAFETY HOURS



ADVANCE
DELIVERY



ANOVA FEEDMILL

DONG NAI, VIETNAM

CLIENT:	Anova Group
SCALE:	60,200 sqm
CONSTRUCTION PERIOD:	6 months
SCOPE OF WORK:	Full MEP Installation
SECTOR:	Animal Food Production



PROJECT DESCRIPTION

ANOVA Group expended to build up a new factory in Dong Nai on a 6-ha area in its strategy to meet its growing customers' demand faster.

Reecons delivered an on-time 100%-safety-hours' project, and met Anova's quality requirements with the following installed system: Electrical system from HV station down to LV end-load including all internal & external lighting, VRF system for office area and plumbing system for the whole project.

PROJECT FEATURES



VALUE
ENGINEERING



ACHIEVED
SAFETY HOURS



NUTRECO FACTORY PHASE 2

BIEN HOA, VIETNAM

CLIENT:	Nutreco International Vietnam Co., Ltd.
SCALE:	20,000 sqm
CONSTRUCTION PERIOD:	8 months
SCOPE OF WORK:	Full MEP Installation
SECTOR:	Animal Food Production



PROJECT DESCRIPTION

Nutreco is the world's largest manufacturer of animal nutrition and aquaculture feed. Nutreco has presented in over 30 countries, producing over 50,000 tons of high-quality shrimp and fish, as well as supplying specialty feed to the majority of big aquaculture operations in Southeast Asia.

Nutreco has invested in developing its expansion factory since 2014, after 8 years of operation, to increase production capacity and meet market demand. Reecons was selected as an MEP Contractor, and we collaborate closely with the Civil Contractor ATAD. The package includes major disciplines such as fire alarm, fire fighting, HVAC, electrical, plumbing and waste water treatment, and an extra low voltage system. The project is expected to be completed in 8 months and to its first production in Q1/2022.

PROJECT FEATURES



ACHIEVED
SAFETY HOURS



ON-TIME
DELIVERY



NESTLE BINH AN FACTORY

BIEN HOA, VIETNAM

CLIENT:	Nestle Vietnam Company Limited
SCALE:	12,200 sqm
CONSTRUCTION PERIOD:	4 months
SCOPE OF WORK:	Full MEP Installation
SECTOR:	Food & Beverage



PROJECT DESCRIPTION

Nestlé invested in an additional facility in Dong Nai to meet the growing demand for MILO products in Vietnam and to strengthen its presence in the growing nutritional beverage sector.

Reecons handled successfully this challenging project with high quality requirements, achieved a 1,000,000 safety hours, and on-time delivery despite a very tight given schedule. Dismantlement of existing mesh cable, air conditioning, and lighting fixtures, and then reinstallation combined with new equipment while the factory remains under operation thanks to anti-dust protection. Electrical system and firefighting system were installed for new factory adjacent the existing one, complying with NFPA standard and certified UL/FM.

PROJECT FEATURES



ACHIEVED
SAFETY HOURS



APPROVED



REBISCO BISCUIT FACTORY

VSIP II BINH DUONG, VIETNAM

CLIENT:	Rebisco Biscuit Company Limited
SCALE:	20,600 sqm
CONSTRUCTION PERIOD:	5 months
SCOPE OF WORK:	Design Development & Installation - Full MEP system
SECTOR:	Food & Beverage

Rebisco
ARTELIA
 Passion & Solutions

PROJECT DESCRIPTION

Reecons was selected as MEP contractor for design and build works on this 20,000-sqm factory in VSIP II. Reecons have handled successfully this valuable project: on-time delivery, 100%-safety-hours' project, with no physical defect and met the high standard requirement from the client, such as NFPA and UL/FM for firefighting system & HACCP and GMP requirements.

PROJECT FEATURES



ACHIEVED
SAFETY HOURS



ON-TIME
DELIVERY



IRON MOUNTAIN WAREHOUSE

DAIWA HOUSE, DONG NAI, VIETNAM

CLIENT:	Iron Mountain Vietnam
SCALE:	7,230 sqm
CONSTRUCTION PERIOD:	4 months
SCOPE OF WORK:	Fit-out: Civil, Structure, MEP installation
SECTOR:	Paper Storage Warehouse

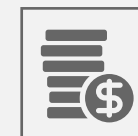
IRON MOUNTAIN
JLL

PROJECT DESCRIPTION

Iron Mountain, a leading record management and storage company, has numerous storage facilities spread across various cities in Asia. Iron Mountain decides to lease a new warehouse in HCM City, Vietnam for their business growth.

Reecons was awarded for the whole fit-out package including the installation of man-up racks with fire fighting for VESDA system, the verifications and assessment of the existing Fire Service system conditions, distribution box and functional LED lightings, power supply for the order picker charging point, security system, exterior work for Iron Mountain Logo and interior equipment for office area.

PROJECT FEATURES



VALUE
ENGINEERING



ACHIEVED
SAFETY HOURS



DETMOULD PACKAGING FACTORY

BIEN HOA, VIETNAM

CLIENT:	Detmold Packaging Vietnam Company Limited
SCALE:	3,500 sqm
CONSTRUCTION PERIOD:	5 months
SCOPE OF WORK:	Fit-out - Civil and MEP systems
SECTOR:	Packaging Production



PROJECT DESCRIPTION

Reecons was selected as the Design & Build contractor for fit-out works, including MEP system for Detmold Packing's first factory in VSIP-I. Reecons delivered successfully within 3 months as required by the client, on the following systems: MSB, power cable, LED high-bay lightings, firefighting, waste water treatment system, plumbing system, chilled water system to cool the printing machines and wax tanks with heat control system.

When Detmold Packing expanded on three additional facilities in VSIP II, they confirm their trust in Reecons by awarding the Design & Build mission, and once again Reecons committed to deliver on-time with very tight schedule, high quality requirements and 100% safety-hours to satisfy client's expectations.

PROJECT FEATURES



VALUE
ENGINEERING



ACHIEVED
SAFETY HOURS



ADVANCE
DELIVERY



BACKER HEATING FACTORY

KIZUNA 1, LONG AN, VIETNAM

CLIENT:	Backer Heating Technologies Vietnam
CONSTRUCTION PERIOD:	5 months
SCOPE OF WORK:	Fit-out - Full Civil and MEP Package
SECTOR:	Thermal Equipment Production

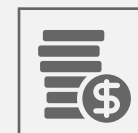


PROJECT DESCRIPTION

In 2018, NIBE Group - a Climate Solutions, Element and Stoves from Sweden - has established its first company located in Kizuna 1 Serviced Factory Area called Backer Heating Factory. Backer Heating specializes in assembling and producing thermal equipment and heating equipment for automobiles.

To complete with the existing system in Kizuna Ready-built Factory, Reecons has been awarded by NIBE Group for the whole package of fit-out works including the necessary mechanical system for production line, electrical required inside the factory, fire fighting system with a guarantee of 1-year preventive maintenance to ensure 0% percent defects after handing over.

PROJECT FEATURES



VALUE
ENGINEERING



ACHIEVED
SAFETY HOURS



USG BORAL FACTORY PHASE 2

HIEP PHUOC INDUSTRIAL, NHA BE, VIETNAM

CLIENT:	USG Boral Vietnam
SCALE:	4,530 sqm
CONSTRUCTION PERIOD:	4 months
SCOPE OF WORK:	Full MEP installation
SECTOR:	Building Material - Gypsum Production

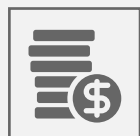


PROJECT DESCRIPTION

USG Boral started operations in Vietnam in 2005, and is the first foreign company with plasterboard manufacturing facilities in Vietnam. Located in Hiep Phuoc Industrial Zone, USG Boral's factory supplies an extensive selection of building materials to various target audiences in Vietnam.

In late 2020, due to the demand of production, USG decided to expand their factory with phase 2. Reecons was awarded the full MEP installation package, under the main contractor TTCL. The project is complete after 4 months and catch the project planning, despite the difficulty under COVID-19 situation, long holiday during Lunar New Year.

PROJECT FEATURES



VALUE
ENGINEERING



ACHIEVED
SAFETY HOURS



SANOVI VIETNAM FACTORY

THU DUC, VIETNAM

CLIENT:	Sanofi Sybthelabo Vietnam Company Limited
SCALE:	6,500 sqm
CONSTRUCTION PERIOD:	3 months
SCOPE OF WORK:	Renovation - Full MEP system
SECTOR:	Pharmaceuticals



PROJECT DESCRIPTION

Reecons was awarded as MEP contractor for the renovation works of the existing Sanofi factory based in HCMC. Reecons has successfully executed this challenging project, achieving a 1,000,000 safety hours and on-time delivery with the following installed system: Electrical systems including power panel, power cable, lighting and power outlet, HVAC & Plumbing systems for clean room and laboratories complying with GMP & GLP standard.

PROJECT FEATURES



ACHIEVED
SAFETY HOURS




ADVANCE
DELIVERY





GREIF FLEXIBLE FACTORY

DONG NAI, VIETNAM

CLIENT:	Greif Flexible Vietnam	
SCALE:	4,500 sqm	
CONSTRUCTION PERIOD:	6 months	
SCOPE OF WORK:	Design & Build - Civil works, Steel Structure and MEP system	
SECTOR:	Packaging Production	

PROJECT DESCRIPTION

Greif, Inc. – a global leader in industrial packaging products and services, has invested in a new factory in Giang Dien IP, Dong Nai Province.

Reecons was appointed as the Design & Build contractor to deliver in high quality standard MEP services high tech installations while still ensuring a tight budget, by providing cost-effective MEP solutions, resulting in a reduction of 17% investment cost compared to market baseline.

PROJECT FEATURES



RECOMMENDED
BY CLIENT



VALUE
ENGINEERING



ACHIEVED
SAFETY HOURS




ADVANCE
DELIVERY



DAIKAN VIETNAM FACTORY

DONG NAI, VIETNAM

CLIENT:	Daikan Vietnam Company Limited	
SCALE:	27,000 sqm	
CONSTRUCTION PERIOD:	6.5 months	
SCOPE OF WORK:	Design & Build - Civil, Structure and MEP construction	
SECTOR:	Advertising Board	

PROJECT DESCRIPTION

Japanese factory project with the following installed MEP systems: 1600 kVA transformer station, HV panel, LV & ELV including data, telephone, camera and access control system, HVAC system and Firefighting system.

With the strength and the experience on international hi-tech projects, Reecons project team has cooperated closely with the Civil contractor all along the project to deliver on-time with strict quality and safety requirement from Daikin Japan, although the project was executed during a heavy rainy season.

PROJECT FEATURES



VALUE
ENGINEERING



ACHIEVED
SAFETY HOURS



ADVANCE
DELIVERY



REFERENCES

REAL-ESTATE PROJECTS





FRENCH GENERAL CONSULATE

HO CHI MINH CITY, VIETNAM

CLIENT:	Consulat général de France à Ho Chi Minh-Ville
SCALE:	15,000 sqm
CONSTRUCTION PERIOD:	2 months
SCOPE OF WORK:	HVAC renovation works



PROJECT DESCRIPTION

Since 1872, the Consulate General of France buildings in Ho Chi Minh City has been going through many renovations to preserve its culture and heritage values.

In 2017, Reecons was appointed to perform the renovation works for the HVAC system. A water-cooled chiller was installed to replace the existing degraded systems and to accommodate the needs of cooling for the entire main building and utilities. In addition, the fan-coil units (FCUs) are well integrated into the existing system.

As a historic building, the client requires a high standard of aesthetics and precise works on the renovation, Reecons has achieved it to fulfill their satisfactions.

PROJECT FEATURES



VALUE
ENGINEERING



ACHIEVED
SAFETY HOURS



HEAT RECOVERY



SATRA EXIMLAND BUILDING

PHAN DANG LUU - PHU NHUAN, VIETNAM

CLIENT:	Eximland
SCALE:	34,000 sqm
CONSTRUCTION PERIOD:	3.5 months
SCOPE OF WORK:	Full MEP Installation



PROJECT DESCRIPTION

Reecons was awarded to execute MEP works including power panel, power cables, cable tray and trunking, lighting fixtures and socket outlets for services and workstations, HVAC system and Firefighting system for 4 commercial floors within 3.5 months.

With this tight given schedule, Reecons had to be well prepared and followed a strict schedule to combine closely with the Interior Design contractor to pass right behind handed-over areas.

PROJECT FEATURES



ACHIEVED
SAFETY HOURS



HV, MV, ELV



MERCEDES-BENZ SHOWROOM

HO CHI MINH CITY, VIETNAM

CLIENT:	Mercedes-Benz Vietnam
SCALE:	3,500 sqm
CONSTRUCTION PERIOD:	2.5 months
SCOPE OF WORK:	Fit-out for MEP system in existing building



Mercedes-Benz

PROJECT DESCRIPTION

The Mercedes-Benz showroom is located in Tan Binh District, HCMC, the building is composed of three floors, including showroom and back office spaces. Reecons was selected to provide design & build services for the entire MEP package, including firefighting.

The client wanted to completely renovate the existing building for it to become a showroom for luxury cars with high aesthetic requirements.

After a thorough survey of the site and an audit of the existing MEPF building system, Reecons offered a cost-effective design solution to the client by re-using most of the existing facilities remaining in good condition to integrate with the new optimal design, leading to 30% of the cost savings.

PROJECT FEATURES



VALUE
ENGINEERING



ACHIEVED
SAFETY HOURS



ALDO SHOES RETAIL STORE

SAIGON CENTER - HO CHI MINH CITY, VIETNAM

CLIENT:	Aldo Vietnam
SCALE:	50 sqm
CONSTRUCTION PERIOD:	1 month
SCOPE OF WORK:	M&E Fit-out works in shopping mall

ALDO

PROJECT DESCRIPTION

Aldo's luxury retail store is located in the Saigon Center and included a variety of decorative lighting inside the box and cabinets, has been well installed by Reecons' workmanship and technical team.

All the flexible air ducts were connected to the existing air conditioning system of the Saigon Center building. The project was delivered 10 days in advance compared to the contract schedule.

PROJECT FEATURES



ADVANCE
DELIVERY



FUTURE WORLD RETAIL STORE

NGUYEN THI MINH KHAI, HO CHI MINH CITY, VIETNAM

CLIENT:	Future World Vietnam
SCALE:	60 sqm
CONSTRUCTION PERIOD:	0.5 months
SCOPE OF WORK:	M&E Fit-out works in existing building



PROJECT DESCRIPTION

With the understanding of the vision and design style of FutureWorld, coming with high requirements for the aesthetic, Reecons conducted the fit-out works for the entire power supply, functional and decorative lighting, socket outlet for electronic devices, air grill integrated with flexible air ducts connection and firefighting relocation with high quality.

Reecons delivered the project on-time, applied the best practices on the protection of the space during construction in order to avoid damages to the existing building facility, following the initial requirements from the landlord.

PROJECT FEATURES



ACHIEVED
SAFETY HOURS



ADVANCE
DELIVERY



LEVI'S RETAIL STORES

HO CHI MINH CITY, VIETNAM

CLIENT:	Levi's Vietnam
SCALE:	6 stores with 45 sqm per store
CONSTRUCTION PERIOD:	0.5 months
SCOPE OF WORK:	M&E Fit-out works in existing building



PROJECT DESCRIPTION

Following the development plan of Levi's stores for Vietnam market, Reecons was appointed as MEP contractor for their MEP system audit and refurbishment. We implemented our fit-out works for their 6 stores located all around Ho Chi Minh city.

As the MEP specialist, we re-design the lighting system to make sure it achieves the required LUX level by re-arranging and increasing the number of lights where necessary. We found that the fresh air supplied from the HVAC system was distributed unevenly, so an replacement for FCU systems had been proposed to solve the problem.

PROJECT FEATURES



ACHIEVED
SAFETY HOURS



AEON MALL BINH TAN

HO CHI MINH CITY, VIETNAM

CLIENT:	AEON Group
SCALE:	1,200 sqm
CONSTRUCTION PERIOD:	2 months
SCOPE OF WORK:	M&E Fit-out works in shopping mall



PROJECT DESCRIPTION

The entire fit-out works cover power supply connection to the stores taken from the main power supply of the building, lighting system, socket outlet, ELV system including data, telephone, speaker, fire alarm and air conditioning system with air ducts, return & supply air grill.

In particular, the plumping system was designed & installed by Reecons with safety, high quality of finishing, and advance on the schedule for the opening date.

PROJECT FEATURES

VALUE
ENGINEERING

ACHIEVED
SAFETY HOURS



PENTHOUSES IN CITY GARDEN

BINH THANH, HO CHI MINH CITY, VIETNAM

CLIENT:	DFA Vietnam
SCALE:	3,000 sqm
CONSTRUCTION PERIOD:	2.5 months per penthouse
SCOPE OF WORK:	M&E Fit-out works in residential building



PROJECT DESCRIPTION

City Garden has been recognized as one of the most high-end residential project in Ho Chi Minh city located in Binh Thanh district. By working with DFA Vietnam, Reecons was choosen to complete 4 penthouses No. 3004-B1(L), 3002-B1(S), 2701-B2(M), and 3003.

Knowing the luxury standards from the owner and specifications from interior designs, the MEP systems were aesthetically installed hidden behind the decorative furnitures, integrated the smart home system to enhanced the convenience of users.

PROJECT FEATURES

ACHIEVED
SAFETY HOURS



YAU HAU FOOK RESTAURANT

THUAN KIEU PLAZA, HO CHI MINH CITY, VIETNAM

CLIENT:	Yau Hau Fook Company, Limited
SCALE:	750 sqm
CONSTRUCTION PERIOD:	2 months
SCOPE OF WORK:	M&E Fit-out works in complex building



PROJECT DESCRIPTION

Reecons was selected as General Contractor to provide the design & construction package for the entire M&E fit-out works for the Chinese restaurant located on the 5th floor of Thuan Kieu plaza.

The design team had produced an outstanding concept requiring high-quality of finishing work and strict on-time delivery.

The most difficult challenge during construction work is the entrance & cargo lift area restricted by the builder. However, Reecons overcame and ensured the respect of schedule and quality.

PROJECT FEATURES



ACHIEVED
SAFETY HOURS



LA TAVOLA RESTAURANT

PETRONAS TOWER, HO CHI MINH CITY, VIETNAM

CLIENT:	Tavola Restaurant
SCALE:	500 sqm
CONSTRUCTION PERIOD:	1.5 months
SCOPE OF WORK:	M&E Fit-out works in office building

TAVOLA

PROJECT DESCRIPTION

La Tavola is a luxury Italian Restaurant with a concept of representing a place of enjoyment and nourishment for both body and spirit. Interior concept design brings modern and old materials into a new harmony, allowing the user to focus on the food served by the Italian chef.

Reecons was called by the owner to complete the fit-out for HVAC and Electrical systems. The challenge for Reecons team was the integration of the entire system with the conceptual idea of bare finishing, exposed M&E system in dining and open kitchen areas.

As the restaurant requires different operation times from the office building, a separated VRV system was dedicatedly installed to run after 5:00pm.

PROJECT FEATURES



ACHIEVED
SAFETY HOURS



ADVANCE
DELIVERY

VINAGAME DATA CENTRE

HO CHI MINH CITY, VIETNAM

CLIENT: VNG Corporation

CONSTRUCTION PERIOD: 10 months

SECTOR: Information technology & Digital services

VNGGAMES

PROJECT DESCRIPTION

The first Data Center of VNG Corporation at 20 Cong Hoa, HCMC was designed and built to meet international standards of Data Center (TIA-942) - Tier 3+ - concurrently maintainable with 99.982% Availability.

- Advanced network cabling system of Krone technology;
- The power system is backed up by 3 levels, with a capacity of 2000KVA, with 2 backup generators (1 machine / 1000KVA), connected to the LSSB main switchboard through an ATS automatic converter to ensure high availability on power supply;
- The UPS system includes batteries, JAP & PDU for an N+1 redundancy operated UPS system with 2-hour autonomy (at full load) blocks.
- The CRACs precision cooling system is cooled by the four CH-01-04 water chillers (2 x duty & 2 x standby ~ 260T/1 CH) to ensure that the servers operate continuously in high temperature conditions and the optimal humidity;
- Specialized fire fighting system ensures early fire detection and automatic fire extinguishing with extinguishing agents that are not harmful to equipment and workers;
- Security system and monitoring access and BMS system for the whole building and the construction site.

SACOMBANK DATA CENTRE

BINH DUONG, VIETNAM

CLIENT: Saigon Thuong Tin Commercial Joint Stock Bank

CONSTRUCTION PERIOD: 8 months

SECTOR: Banking

Sacombank

PROJECT DESCRIPTION

Data Center of Sacombank was built and completed in 2008, in Binh Duong province. Data Center is designed and built to meet international standards of data center (TIA-942) - Tier 3 - concurrently maintainable at 99.982% availability

- Server and Network Room provides 70 dedicated racks for about 200 servers and 10 racks for WAN infrastructure connecting all Sacombank branches nationwide;
- Advanced network cabling system of Krone technology;
- The power system is backed up by 3 levels, ensuring high availability of power supply;
- Precise cooling system ensures the servers to operate continuously in the best temperature and humidity conditions;
- Specialized fire fighting system ensures early fire detection and automatic fire extinguishing with extinguishing agents that are not harmful to equipment and workers;
- Security system and monitoring access for the whole building and the construction site.



HANH PHUC HOSPITAL

HO CHI MINH CITY, VIETNAM

CLIENT: Hoan My Corporation
SCOPE OF WORK: MEP installation and complete works



VINMEC INTERNATIONAL HOSPITAL

HO CHI MINH CITY, VIETNAM

CLIENT: Vingroup Joint Stock Company (Vingroup JSC)
SCOPE OF WORK: MEP works



HOA LAM HOSPITAL

BINH TAN, HO CHI MINH CITY, VIETNAM

CLIENT: Hoa Lam Corporation
SCOPE OF WORK: MEPF installation works



MAGWAY GENERAL HOSPITAL

MYANMAR

CLIENT: Ministry of Health with Japan International Cooperation Agency (JICA)
SCOPE OF WORK: MEPF works



NEW YANGON SPECIALIST HOSPITAL

MYANMAR

CLIENT: Medical Services (DoMS) and Japan International Cooperation Agency (JICA)
SCOPE OF WORK: MEP installation and complete works



HABITAT PHASE 1

HO CHI MINH CITY, VIETNAM

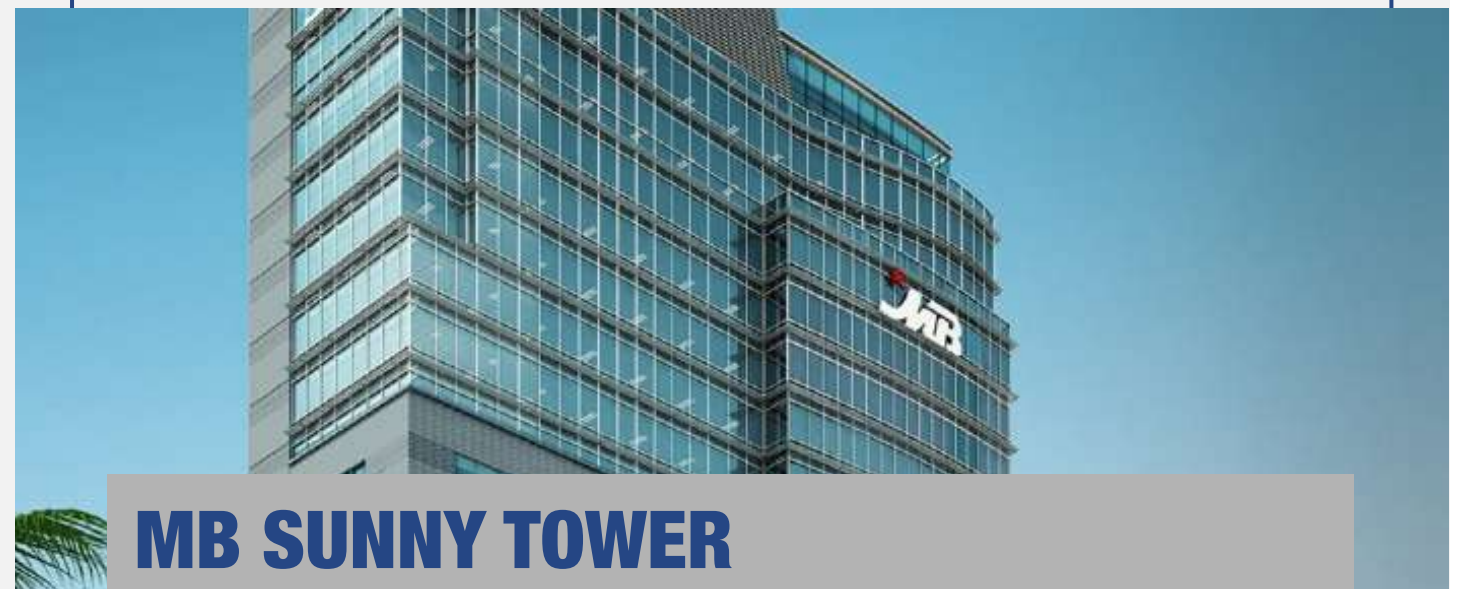
CLIENT: Sembcorp – Singapore
SCOPE OF WORK: MEP works



SIEM REAP PROVINCIAL HOSPITAL

CAMBODIA

CLIENT: Royal Provincial Dept. and Japan International Cooperation Agency (JICA)
SCOPE OF WORK: MEPF installation works



MB SUNNY TOWER

HO CHI MINH CITY, VIETNAM

CLIENT: MB Land
SCOPE OF WORK: Full MEPF scope



**REECONS MECHANICAL ELECTRICAL
ENGINEERING CORPORATION**

Head Office

No.30, Road 2, Van Phuc Riverside City
Avenue 13, Hiep Binh Phuoc Ward
Thu Duc City, Ho Chi Minh City
Vietnam

+84 (0) 28 3620 3625

Ha Noi Office

Level 9, VP Bank Tower,
05 Dien Bien Phu
Ba Dinh District, Hanoi,
Vietnam

Da Nang Office

Level 3, Indochina Riverside Tower
74 Bach Dang
Hai Chau District, Da Nang
Vietnam

+84 (0) 236 3664 680

info@reecons.vn

www.reecons.vn